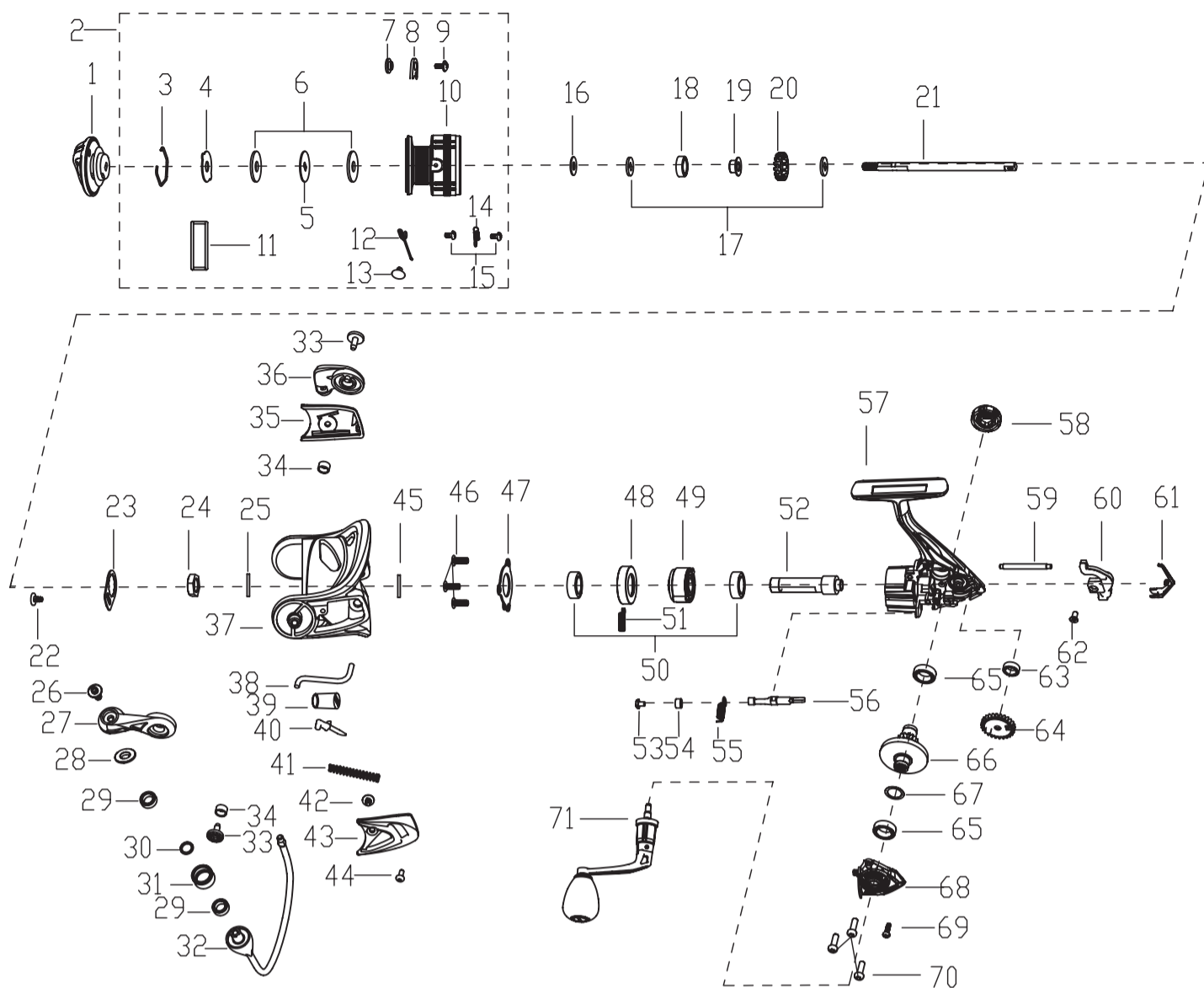


EXPLODED VIEW OF LUX-1000



PARTS LIST OF LUX-1000

ITEM#	PARTS DESCRIPTION	ITEM#	PARTS DESCRIPTION
1	Drag Knob Assembly	36	Bail Holder
2	Spool Assembly	37	Rotor
3	Washer Retaining Ring	38	Rotor Trip Lever
4	Ear Washer	39	Balance Block
5	Keyed Washer	40	Pivot Arm
6	Washer(2req.)	41	Spring
7	Spool Clicker Spacer Ring	42	Screw
8	Spool Click Plate	43	Bail Arm Cover
9	Screw	44	Screw
10	Spool	45	Rotor Washer
11	Spool Rubber	46	Screw(3req.)
12	Spring	47	Ball Bearing Retainer
13	Line Clip	48	Bearing Holder
14	Spring	49	Clutch Assembly
15	Screw(2req.)	50	Bearing(2req.)
16	Spool Adjust Washer	51	Clutch Spring
17	Main Shaft Washer(2req.)	52	Pinion
18	Bearing	53	Screw
19	Spool Holder	54	Pom Bushing
20	Click Gear	55	Clutch Switch Spring
21	Main Shaft	56	Clutch Switch
22	Screw	57	Body Assembly
23	Rotor Nut Set Plate	58	Handle Cap
24	Rotor Nut	59	Slider Guide Shaft
25	Washer	60	Slider
26	Line Roller Screw	61	Body Rear Cover
27	Bail Arm	62	Screw
28	Line Roller Collar	63	Bearing
29	Bearing(2req.)	64	Oscillation Gear
30	Line Roller Washer	65	Bearing(2req.)
31	Line Roller	66	Driver Gear
32	Bail Assembly	67	Washer
33	Bail Arm Screw(2req.)	68	Body Cover Assembly
34	Bushing(2req.)	69	Screw
35	Bail Holder Cover	70	Screw(3req.)
		71	Handle Assembly