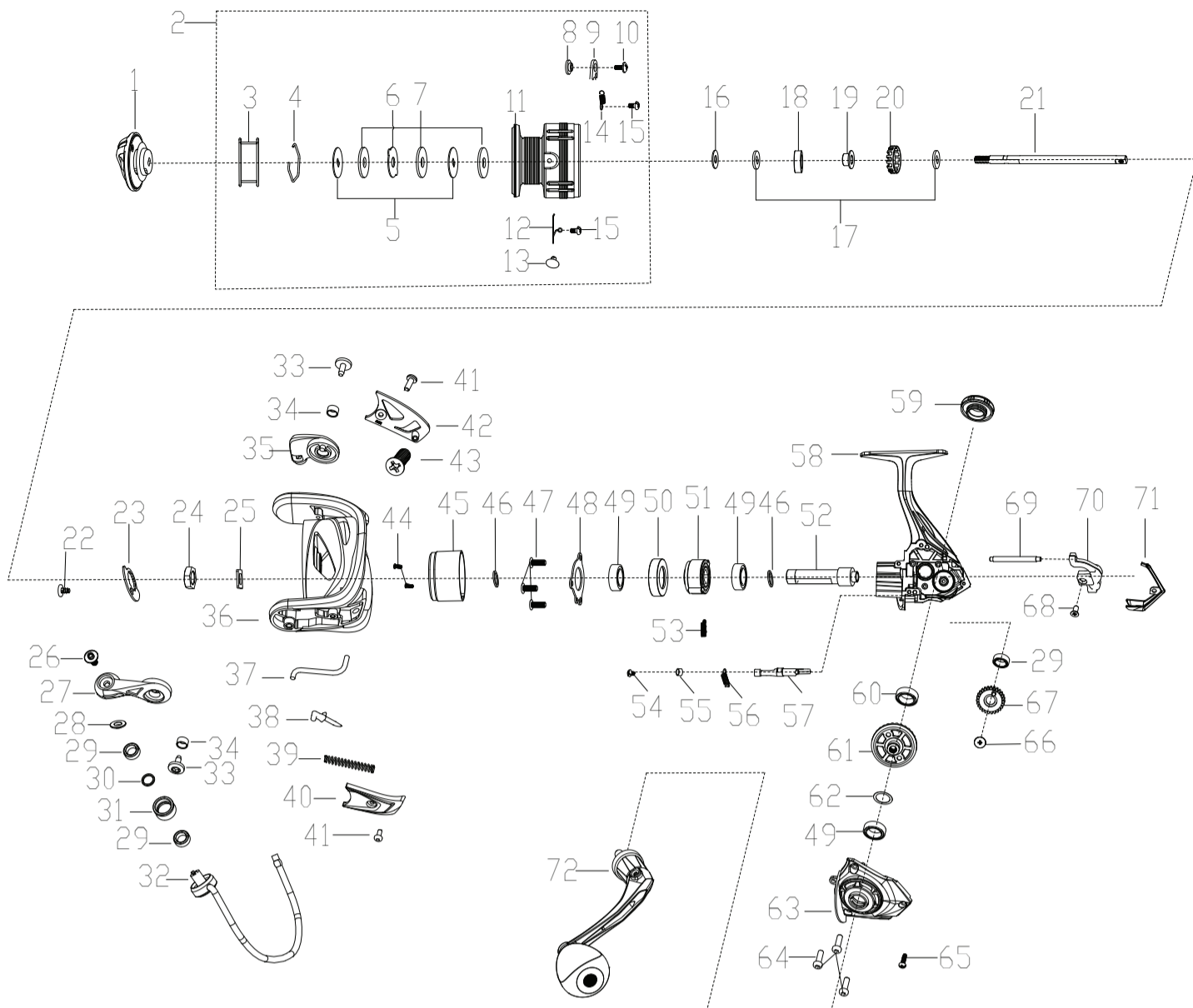


EXPLODED VIEW OF LUX-2000



PARTS LIST OF LUX-2000

| ITEM# | PARTS DESCRIPTION | ITEM# | PARTS DESCRIPTION |
|-------|---------------------------|-------|-----------------------|
| 1 | Drag Knob Assembly | 37 | Rotor Trip Lever |
| 2 | Spool Assembly | 38 | Pivot Arm |
| 3 | Spool Rubber | 39 | Spring |
| 4 | Washer Retaining Ring | 40 | Bail Arm Cover |
| 5 | Keyed Washer(2req.) | 41 | Screw(2req.) |
| 6 | Ear Washer | 42 | Bail Holder Cover |
| 7 | Washer(3req.) | 43 | Screw |
| 8 | Spool Clicker Spacer Ring | 44 | Screw(2req.) |
| 9 | Spool Click Plate | 45 | Body Head Cover |
| 10 | Screw | 46 | Rotor Washer |
| 11 | Spool | 47 | Screw(3req.) |
| 12 | Spring | 48 | Ball Bearing Retainer |
| 13 | Line Clip | 49 | Bearing(3req.) |
| 14 | Spring | 50 | Bearing Holder |
| 15 | Screw(2req.) | 51 | Clutch Assembly |
| 16 | Spool Adjust Washer | 52 | Pinion |
| 17 | Main Shaft Washer(2req.) | 53 | Clutch Spring |
| 18 | Pom Bushing | 54 | Screw |
| 19 | Spool Holder | 55 | Pom Bushing |
| 20 | Click Gear | 56 | Clutch Switch Spring |
| 21 | Main Shaft | 57 | Clutch Switch |
| 22 | Screw | 58 | Body Assembly |
| 23 | Rotor Nut Set Plate | 59 | Handle Cap |
| 24 | Rotor Nut | 60 | Bearing |
| 25 | Washer | 61 | Driver Gear |
| 26 | Line Roller Screw | 62 | Washer |
| 27 | Bail Arm | 63 | Body Cover Assembly |
| 28 | Line Roller Collar | 64 | Screw(3req.) |
| 29 | Bearing(3req.) | 65 | Screw |
| 30 | Line Roller Washer | 66 | Screw |
| 31 | Line Roller | 67 | Oscillation Gear |
| 32 | Bail Assembly | 68 | Screw |
| 33 | Bail Arm Screw(2req.) | 69 | Slider Guide Shaft |
| 34 | Bushing(2req.) | 70 | Slider |
| 35 | Bail Holder | 71 | Body Rear Cover |
| 36 | Rotor | 72 | Handle Assembly |